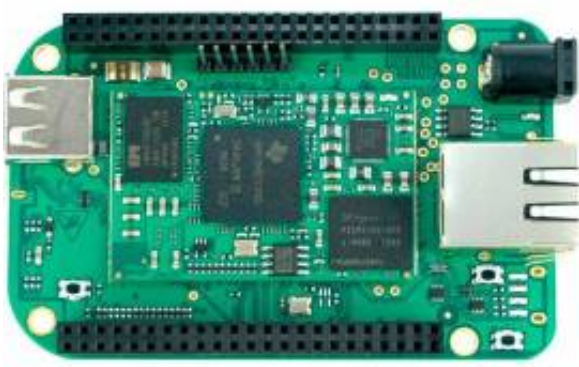


BeagleCore BCS1 Starter Kit with BCM1 Board & Baseboard Breakout



Listing details

Reference Number: RF655535

Common

Price: \$ 184.95
Country: United Kingdom
Description:

BeagleCore BCS1 Starter Kit with BCM1 Board & Baseboard Breakout

The BeagleCore Starter Kit BCS1 is one of the development and debugging options for the BeagleCore BCM1 system on module (SoM). It combines the BCM1 computer module and a baseboard to provide the expansion and connection opportunities to develop your next Internet of Things (IoT) or embedded project.

Features:

BeagleBone Black compatible in a compact package
Texas Instruments AM335x Cortex-A8 Sitara processor running at 1GHz
512Mbytes DDR3 RAM, 4Gbytes eMMC flash memory
Temperature range: 0 to 60°C
Measures 89 x 55 x 15mm

[Purchase Product](#)

Posted: 7 years ago

